

TOOLS HONGZUN



莱州市宏尊机械有限公司
LAIZHOU HONGZUN MACHINERY CO.,LTD.

TOOLS HONGZUN

PROFILE

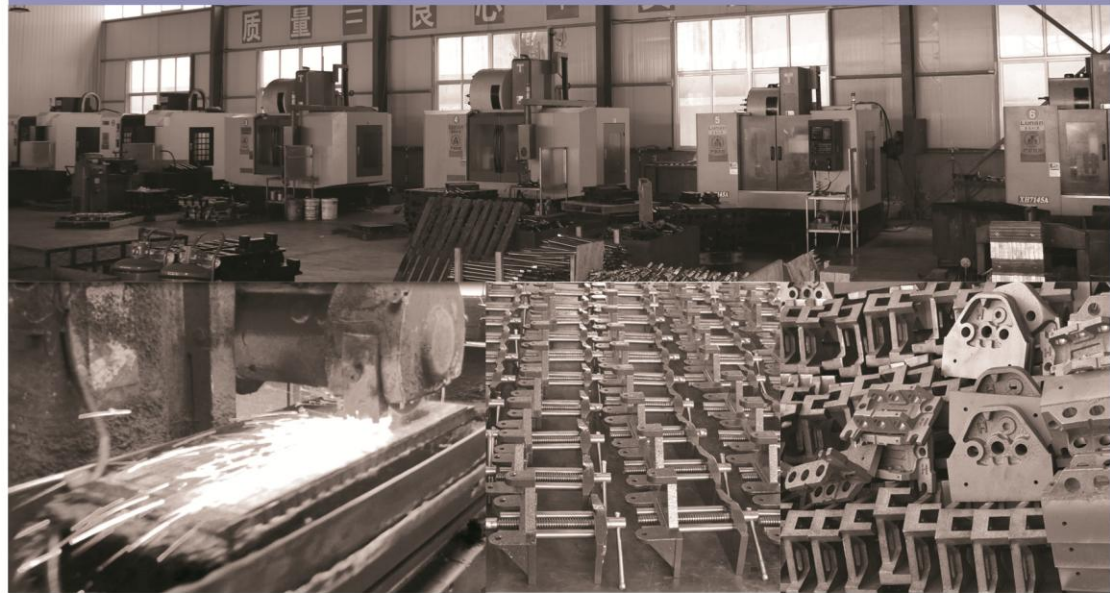
Laizhou Hongzun Machinery Co.,Ltd is a professional manufacturer of hand tool and woodworking machine in China. We supply our products, including woodworking vise, bench vise, table vise, clamp, wrench, anvil, hand shear, machine vise, deburring and beveling machine & woodworking machine, to many large distributors throughout the world. We have more than ten years of experience in hand tools industry.

Hongzun tools integrates development, manufacturing and trading in-house, and participates in various hardware exhibitions in domestic and overseas, and keeps coming up with new products. In 2017, our new products, quick release bench vises and rapid action woodworking vises are favored by customers. Hongzun tools products are complete in specifications with reliable quality and durable in use, enjoy high reputation at home and abroad and exported to England, America and other Western countries.

Hongzun tools annual production capability is 200 thousand pieces of vise and 100 thousand pieces of other types of clamps.

Located in Laizhou Shandong province, we enjoy convenient water, land and air transportation. It only takes two hours to Qingdao Airport.

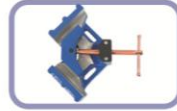
Welcome to our factory and hope to cooperate with you sincerely.



C O N T E N T



Woodworking vise / 1 - 3



Welding vise / 4



Bench vise / 5 - 11



Table vise / 12



Clamp / 13 - 14



Wrench / 14



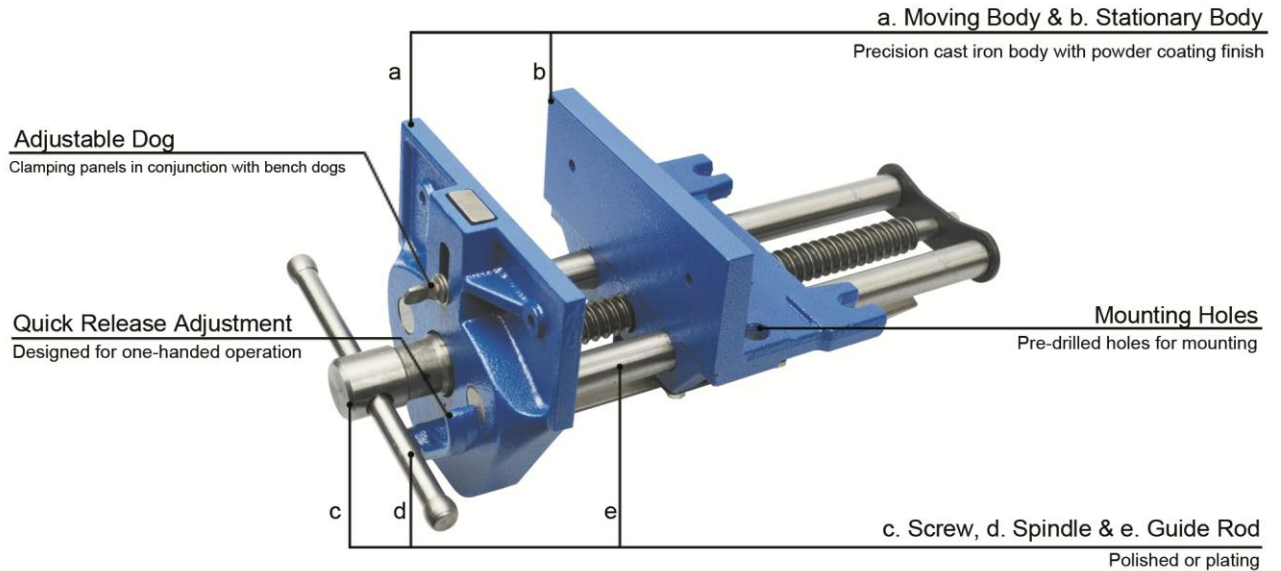
Anvil / 15



Machine vise / 16 - 18



Deburring And Beveling Machine / 19



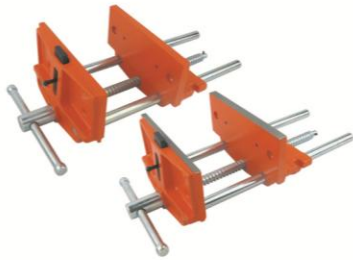
QUICK RELEASE WOODWORKING VISE WITH IRON SPINDLE

MODEL NO.	SIZE (INCH)	WIDTH OF JAW (MM)	MAX. OPENING (MM)	THROAT DEPTH (MM)	QTY/CTN (PCS)	G.W./N.W. (KG)	CARTON SIZE (CM)
KM178	7"	178	200	75	1	10/9	42X20X18
KM230	9"	230	255	105	1	18/16	49X25X19
KM230L	9"	230	330	105	1	19/17	57X25X22
KM265	10-1/2"	265	390	105	1	20/18	63X28X22



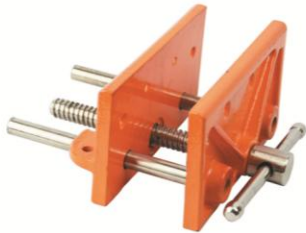
QUICK RELEASE WOODWORKING VISE WITH WOODEN SPINDLE

MODEL NO.	SIZE (INCH)	WIDTH OF JAW (MM)	MAX. OPENING (MM)	THROAT DEPTH (MM)	QTY/CTN (PCS)	G.W./N.W. (KG)	CARTON SIZE (CM)
KM178A	7"	178	200	75	1	10/9	42X20X18
KM230A	9"	230	255	105	1	18/16	49X25X19
KM230AL	9"	230	330	105	1	19/17	57X25X22
KM265A	10-1/2"	265	390	105	1	20/18	63X28X22



ORDINARY TYPE WOODWORKING VISE

MODEL NO.	SIZE (INCH)	WIDTH OF JAW (MM)	MAX. OPENING (MM)	THROAT DEPTH (MM)	QTY/CTN (PCS)	G.W./N.W. (KG)	CARTON SIZE (CM)
M178	7"	178	230	76	1	6.1/5.7	38.5X19.5X13.5



LIGHT DUTY WOODWORKING VISE

MODEL NO.	SIZE (INCH)	WIDTH OF JAW (MM)	MAX. OPENING (MM)	THROAT DEPTH (MM)	QTY/CTN (PCS)	G.W./N.W. (KG)	CARTON SIZE (CM)
M165	6-1/2"	165	115	60	4	11/10	38X22X24



PORTABLE TYPE WOODWORKING VISE

MODEL NO.	SIZE (INCH)	WIDTH OF JAW (MM)	MAX. OPENING (MM)	THROAT DEPTH (MM)	QTY/CTN (PCS)	G.W./N.W. (KG)	CARTON SIZE (CM)
M156	6"	156	115	51	6	20/18	50X46X17
M156A	6"	156	115	51	8	23/21	43X34X38



CORNER MITER VISE

MODEL NO.	SIZE (INCH)	MAX. OPENING (MM)	QTY/CTN (PCS)	G.W./N.W. (KG)	CARTON SIZE (CM)
MG225	2-1/4"	56	20	22/20	48X31X24
MG425	4-1/4"	107	10	26/24	45X42X31



CORNER MITER VISE WITH BASE

MODEL NO.	SIZE (INCH)	MAX. OPENING (MM)	QTY/CTN (PCS)	G.W./N.W. (KG)	CARTON SIZE (CM)
MG100	4"	100	1	7/6	39X24X15
MG178	7"	178	1	11/10	52X33X18



FRONT WOODWORKING VISE

MODEL NO.	SIZE (INCH)	QTY/CTN (PCS)	G.W./N.W. (KG)	CARTON SIZE (CM)
M180	7"	5	23/21	41X19.5X26



FRONT WOODWORKING VISE

MODEL NO.	SIZE (INCH)	QTY/CTN (PCS)	G.W./N.W. (KG)	CARTON SIZE (CM)
M180A	7"	5	27/25	43X25.5X36.5



FRONT WOODWORKING VISE

MODEL NO.	SIZE (INCH)	QTY/CTN (PCS)	G.W./N.W. (KG)	CARTON SIZE (CM)
M265	10-1/2"	2	19/17	57X28X15



SCREW VISE

MODEL NO.	SIZE (INCH)	QTY/CTN (PCS)	G.W./N.W. (KG)	CARTON SIZE (CM)
ML13	13"	1	2.1/2	33.5X8X6



SCREW VISE

MODEL NO.	SIZE (INCH)	QTY/CTN (PCS)	G.W./N.W. (KG)	CARTON SIZE (CM)
ML16	16"	1	3/2.8	46X11.5X6



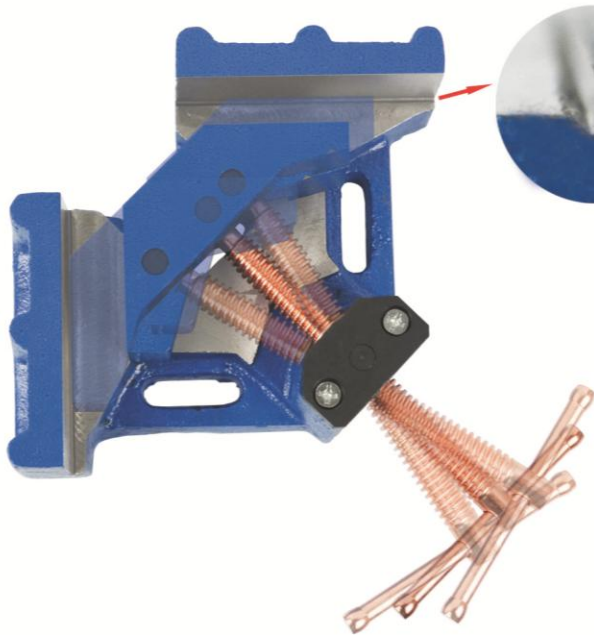
SCREW VISE

MODEL NO.	SIZE (INCH)	QTY/CTN (PCS)	G.W./N.W. (KG)	CARTON SIZE (CM)
ML16A	16"	1	3.7/3.5	46X11.5X6



SLIDE WOODWORKING VISE

MODEL NO.	SIZE (INCH)	QTY/CTN (PCS)	G.W./N.W. (KG)	CARTON SIZE (CM)
MV01A	1"X14"	1	7.5/7	35X16X11
MV01B	1-1/4"X17-1/2"	1	9.5/9	42X19X13



NEW Clearance Groove

Features:

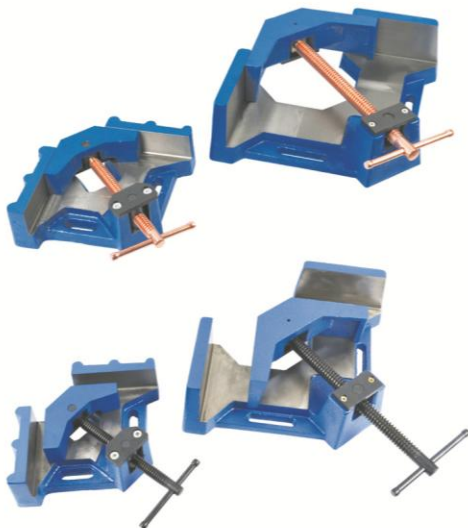
- Right angle clamping
- Grip workpieces of different thicknesses
- A choice of clearance groove, for accurate grip, makes the workpieces more close to side and base
- Sturdy frame made from grey cast iron or ductile iron, powder coating finish to resist corrosion

WELDING VISE WITH COPPER PLATED SPINDLE

MODEL NO.	WIDTH OF JAW (MM)	MAX. OPENING (MM)	QTY/CTN (PCS)	G.W./N.W. (KG)	CARTON SIZE (CM)
W04C	105	55	5	25/23	40X26X24
W045C	115	120	4	34/33	42X31X32

WELDING VISE WITH BLACK OXIDE SPINDLE

MODEL NO.	WIDTH OF JAW (MM)	MAX. OPENING (MM)	QTY/CTN (PCS)	G.W./N.W. (KG)	CARTON SIZE (CM)
W04	105	55	5	25/23	40X26X24
W045	115	120	4	34/33	42X31X32



a. Moving Body & b. Stationary Body

Precision cast iron body with powder coating finish

Large Anvil

Polished finish

c. Spindle & d. Screw

Polished or plating

Replaceable Jaws

With diamond pattern face

Lock Screw

For locking and rotating the base

Quick Release Adjustment

Designed for one-handed operation

Base & Mounting Holes

360 Degree swivel base with pre-drilled holes

SWIVEL QUICK RELEASE BENCH VISE WITH ANVIL



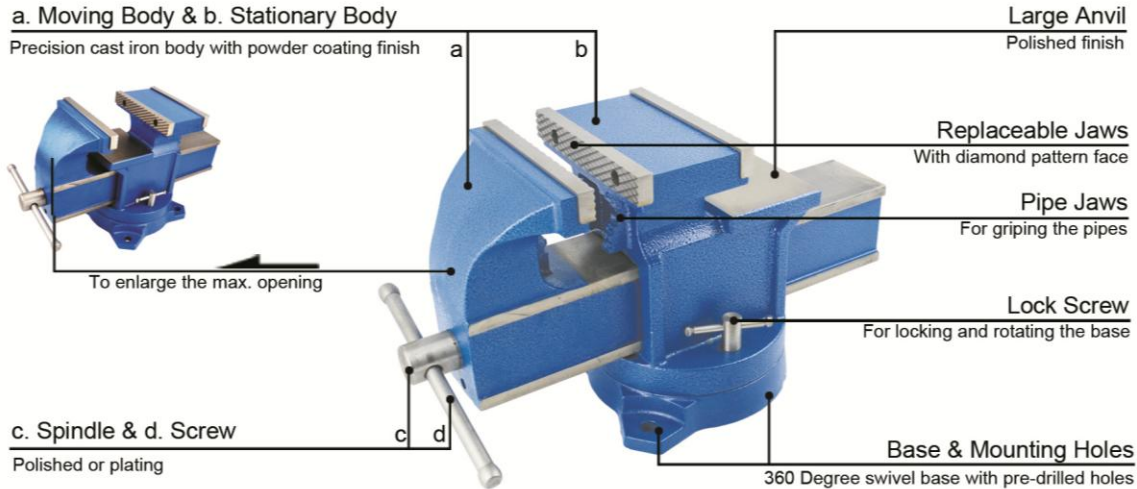
MODEL NO.	SIZE (INCH)	WIDTH OF JAW (MM)	MAX. OPENING (MM)	THROAT DEPTH (MM)	QTY/CTN (PCS)	G.W./N.W. (KG)	CARTON SIZE (CM)
KT100	4"	100	100	62	1	9.8/8.8	36.5X16X20
KT125	5"	125	125	75	1	12.5/11.5	40.5X17X22
KT150	6"	150	150	92	1	17.5/16.5	46X21X26
KT200	8"	200	200	98	1	22/21	52X26X32

FIXED QUICK RELEASE BENCH VISE WITH ANVIL



MODEL NO.	SIZE (INCH)	WIDTH OF JAW (MM)	MAX. OPENING (MM)	THROAT DEPTH (MM)	QTY/CTN (PCS)	G.W./N.W. (KG)	CARTON SIZE (CM)
KT100G	4"	100	100	62	1	8.6/7.6	36.5X14X18
KT125G	5"	125	125	75	1	11.5/10.5	40.5X15X20
KT150G	6"	150	150	92	1	15.6/14.6	46X18X23
KT200G	8"	200	200	98	1	20/19	52X22X25

BENCH VISE

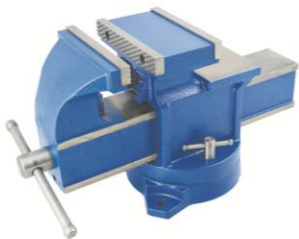


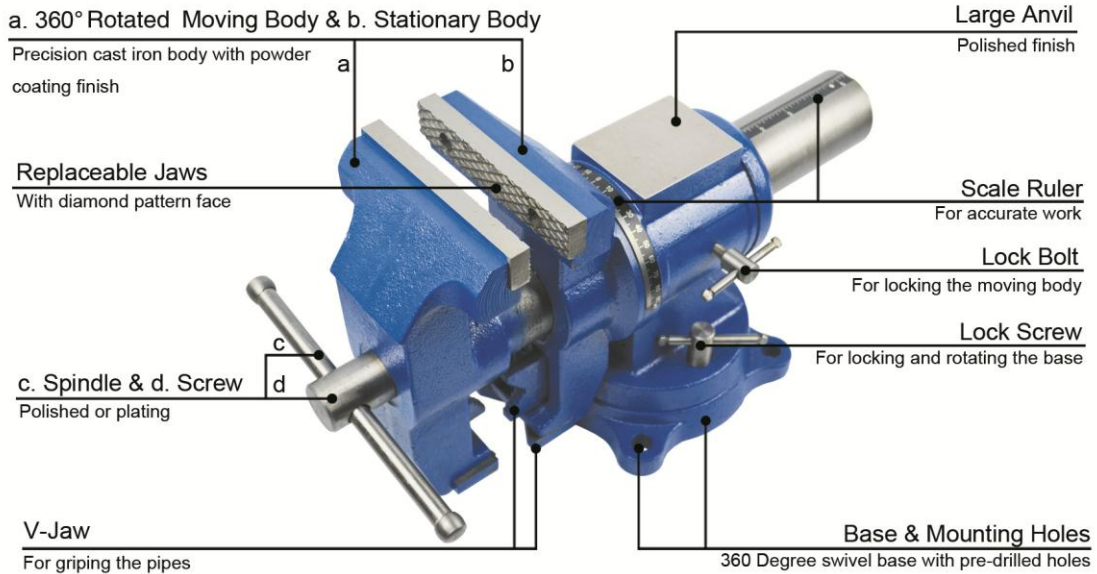
SWIVEL MULTI-PURPOSE BENCH VISE WITH ANVIL

MODEL NO.	SIZE (INCH)	WIDTH OF JAW (MM)	MAX. OPENING (MM)	THROAT DEPTH (MM)	DIAMETER OF PIPE (MM)	QTY/CTN (PCS)	G.W./N.W. (KG)	CARTON SIZE (CM)
TH40	4"	100	100	62	Φ8-32	1	10.5/9.5	36.5X16X20
TH50	5"	125	125	75	Φ10-45	1	14/13	40.5X17X22
TH60	6"	150	150	92	Φ12-60	1	19/18	46X21X26
TH80	8"	200	200	98	Φ16-75	1	25/24	52X26X32

FIXED MULTI-PURPOSE BENCH VISE WITH ANVIL

MODEL NO.	SIZE (INCH)	WIDTH OF JAW (MM)	MAX. OPENING (MM)	THROAT DEPTH (MM)	DIAMETER OF PIPE (MM)	QTY/CTN (PCS)	G.W./N.W. (KG)	CARTON SIZE (CM)
TG40	4"	100	100	62	Φ8-32	1	9.5/8.5	36.5X14X18
TG50	5"	125	125	75	Φ10-45	1	13/12	40.5X15X20
TG60	6"	150	150	92	Φ12-60	1	17/16	46X18X23
TG80	8"	200	200	98	Φ16-75	1	22/21	52X22X25





MULTI-FUNCTION BENCH VISE WITH SCALE RULER

MODEL NO.	SIZE (INCH)	WIDTH OF JAW (MM)	MAX. OPENING (MM)	THROAT DEPTH (MM)	DIAMETER OF PIPE (MM)	QTY/CTN (PCS)	G.W./N.W. (KG)	CARTON SIZE (CM)
DT100	4"	100	100	60	Φ10-45	1	11/10	37X18X18
DT125CQ	5"	125	125	60	Φ10-45	1	12/11	37X18X18
DT125Q	5"	125	125	70	Φ12-60	1	16/15	44X21X21
DT125	5"	125	125	78	Φ12-60	1	21/20	44X21X21
DT150	6"	150	150	78	Φ12-60	1	20/19	45X23X22

BENCH VISE

MULTI-FUNCTION BENCH VISE

- Precision cast iron body with powder coating finish
- A choice of three jaws are available: straight jaws, pipe jaws or the V-jaws
- 360 degree swivel jaws
- Large anvil and spindle with polishing finish
- Replaceable jaw with diamond pattern face
- 360 degree swivel base with twin lock-downs



MODEL NO.	SIZE (INCH)	WIDTH OF JAW (MM)	MAX. OPENING (MM)	THROAT DEPTH (MM)	DIAMETER OF PIPE (MM)	QTY/CTN (PCS)	G.W./N.W. (KG)	CARTON SIZE (CM)
DT125TT	5"	125	95	75	Φ8-50	1	23/22	45X21X24
DT150F	6"	150	150	93	Φ15-70	1	42/40	54X25X27
DT150FF	6"	150	150	97	Φ20-70	1	47/45	55X29X28



MULTI-FUNCTION BENCH VISE

- Precision cast iron body with powder coating finish
- A choice of three jaws are available: straight jaws, pipe jaws or the V-jaws
- 360 degree swivel jaws with lock bolt
- Large anvil with polishing finish
- Spindle with black oxide finish
- Replaceable jaw with diamond pattern face
- 360 degree swivel base with twin lock-downs

MODEL NO.	SIZE (INCH)	WIDTH OF JAW (MM)	MAX. OPENING (MM)	THROAT DEPTH (MM)	DIAMETER OF PIPE (MM)	QTY/CTN (PCS)	G.W./N.W. (KG)	CARTON SIZE (CM)
DT125M	5"	125	125	94	Φ20-60	1	25/24	47X24X25

83 TYPE BENCH VISE SWIVEL BASE WITH ANVIL



MODEL NO.	SIZE (INCH)	WIDTH OF JAW (MM)	MAX.OPENING (MM)	THROAT DEPTH (MM)	QTY/CTN (PCS)	G.W./N.W. (KG)	CARTON SIZE (CM)
8303	3"	75	75	48	4	28/26	56X29X16
8304	4"	100	110	64	2	23/22	37X36X20
8305	5"	125	140	75	1	20/19	43X20X25
8306	6"	150	152	85	1	30/29	52X22X25
8308	8"	200	220	110	1	45/43	60X26X28
8310	10"	250	220	107	1	65/63	63X28X30.5

83 TYPE BENCH VISE FIXED BASE WITH ANVIL



MODEL NO.	SIZE (INCH)	WIDTH OF JAW (MM)	MAX.OPENING (MM)	THROAT DEPTH (MM)	QTY/CTN (PCS)	G.W./N.W. (KG)	CARTON SIZE (CM)
8323	3"	75	75	48	4	24/22	56X29X14
8324	4"	100	110	64	2	21/20	37X36X18
8325	5"	125	140	75	1	18/17	43X20X20
8326	6"	150	152	85	1	27/26	52X22X23
8328	8"	200	220	110	1	42/40	60X26X26
8330	10"	250	220	107	1	57/55	63X28X28

83 TYPE BENCH VISE SWIVEL BASE WITHOUT ANVIL



MODEL NO.	SIZE (INCH)	WIDTH OF JAW (MM)	MAX.OPENING (MM)	THROAT DEPTH (MM)	QTY/CTN (PCS)	G.W./N.W. (KG)	CARTON SIZE (CM)
8353	3"	75	75	48	4	24/22	56X29X16
8354	4"	100	110	64	2	21/20	37X36X20
8355	5"	125	140	75	1	18/17	43X20X25
8356	6"	150	152	85	1	27/26	52X22X25
8358	8"	200	220	110	1	42/40	60X26X28

83 TYPE BENCH VISE FIXED BASE WITHOUT ANVIL



MODEL NO.	SIZE (INCH)	WIDTH OF JAW (MM)	MAX.OPENING (MM)	THROAT DEPTH (MM)	QTY/CTN (PCS)	G.W./N.W. (KG)	CARTON SIZE (CM)
8363	3"	75	75	48	4	24/22	56X29X16
8364	4"	100	110	64	2	21/20	37X36X20
8365	5"	125	140	75	1	18/17	43X20X25
8366	6"	150	152	85	1	27/26	52X22X25
8368	8"	200	220	110	1	42/40	60X26X28

BENCH VISE

89 TYPE BENCH VISE SWIVEL BASE WITH ANVIL



MODEL NO.	SIZE (INCH)	WIDTH OF JAW (MM)	MAX. OPENING (MM)	THROAT DEPTH (MM)	QTY/CTN (PCS)	G.W./N.W. (KG)	CARTON SIZE (CM)
8903	3"	75	75	50	4	20/18	56X28X17
8904	4"	100	100	57	4	30/28	58X31X19
8905	5"	125	110	71	2	27/26	37X36X20
8906	6"	150	140	75	1	21/20	43X20X22
8908	8"	200	152	85	1	31/30	50X22X25
8910	10"	250	220	110	1	47/45	60X26X28

89 TYPE BENCH VISE FIXED BASE WITH ANVIL



MODEL NO.	SIZE (INCH)	WIDTH OF JAW (MM)	MAX. OPENING (MM)	THROAT DEPTH (MM)	QTY/CTN (PCS)	G.W./N.W. (KG)	CARTON SIZE (CM)
8923	3"	75	75	50	4	18/16	56X28X15
8924	4"	100	100	57	4	26/24	58X31X17
8925	5"	125	110	71	2	23/22	37X36X18
8926	6"	150	140	75	1	18/17	43X20X20
8928	8"	200	152	85	1	28/27	50X22X23
8930	10"	250	220	110	1	42/40	60X26X26

HEAVY DUTY FRENCH TYPE BENCH VISE SWIVEL BASE WITH ANVIL

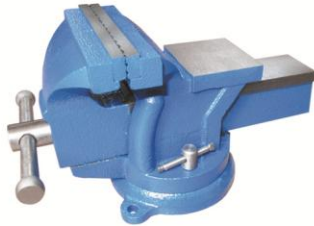


MODEL NO.	SIZE (INCH)	WIDTH OF JAW (MM)	MAX. OPENING (MM)	THROAT DEPTH (MM)	QTY/CTN (PCS)	G.W./N.W. (KG)	CARTON SIZE (CM)
9803	3"	75	75	50	4	20/18	56X28X17
9804	4"	100	100	57	2	15/14	31X29X19
9805	5"	125	130	70	2	22/21	37X36X20
9806	6"	150	140	75	1	17.5/16.5	43X22X22

HEAVY DUTY FRENCH TYPE BENCH VISE FIXED BASE WITH ANVIL



MODEL NO.	SIZE (INCH)	WIDTH OF JAW (MM)	MAX. OPENING (MM)	THROAT DEPTH (MM)	QTY/CTN (PCS)	G.W./N.W. (KG)	CARTON SIZE (CM)
9823	3"	75	75	50	4	18/16	56X28X15
9824	4"	100	100	57	2	13/12	31X29X17
9825	5"	125	130	70	2	20/19	37X36X18
9826	6"	150	140	75	1	15.5/14.5	43X22X20



SUPER LIGHT DUTY BENCH VISE SWIVEL BASE WITH ANVIL

MODEL NO.	SIZE (INCH)	WIDTH OF JAW (MM)	MAX. OPENING (MM)	THROAT DEPTH (MM)	QTY/CTN (PCS)	G.W./N.W. (KG)	CARTON SIZE (CM)
9604	4"	100	75	50	4	22/20	56X28X17
9605	5"	125	115	57	2	16/15	31X29X19
9606	6"	150	130	70	1	24/23	37X36X20
9608	8"	200	140	76	1	18/17	43X22X22



SUPER LIGHT DUTY BENCH VISE FIXED BASE WITH ANVIL

MODEL NO.	SIZE (INCH)	WIDTH OF JAW (MM)	MAX. OPENING (MM)	THROAT DEPTH (MM)	QTY/CTN (PCS)	G.W./N.W. (KG)	CARTON SIZE (CM)
9624	4"	100	75	50	4	20/18	56X28X15
9625	5"	125	115	57	2	14/13	31X29X17
9626	6"	150	130	70	1	22/21	37X36X18
9628	8"	200	140	76	1	17/16	43X22X20



PRECISION BENCH VISE SWIVEL BASE WITH ANVIL

MODEL NO.	SIZE (INCH)	WIDTH OF JAW (MM)	MAX. OPENING (MM)	THROAT DEPTH (MM)	QTY/CTN (PCS)	G.W./N.W. (KG)	CARTON SIZE (CM)
HT100	4"	100	100	56	1	10.5/10	36X16X19
HT125	5"	125	125	67	1	13.5/12.8	41.5X19X21.5
HT150	6"	150	150	75	1	20/19	48.5X22X24.5
HT200	8"	200	200	86	1	34/33	56X24X28



ENGLISH TYPE BENCH VISE

MODEL NO.	SIZE (INCH)	WIDTH OF JAW (MM)	MAX. OPENING (MM)	THROAT DEPTH (MM)	QTY/CTN (PCS)	G.W./N.W. (KG)	CARTON SIZE (CM)
9214	4"	100	120	64	1	7.5/7.2	26X12.5X14
9215	5"	125	140	78	1	14.5/13.6	34.5X17X19
9216	6"	150	170	82	1	18/17	41X21X21
9218	8"	200	210	96	1	39/38	53X30X25

TABLE VISE

GUIDE-BAR TYPE TABLE VISE



MODEL NO.	SIZE (MM)	WIDTH OF JAW (MM)	QTY/CTN (PCS)	G.W./N.W. (KG)	CARTON SIZE (CM)
86202	38	38	20	23/21	45X36X22
86203	50	50	20	27/25	45X36X22
86204	63	63	10	17/16	45X36X22
86205	75	75	10	20/18.2	45X36X22
86206	75	75	20	38/28	45X36X22

LARGE ANVIL GUIDE-BAR TYPE TABLE VISE



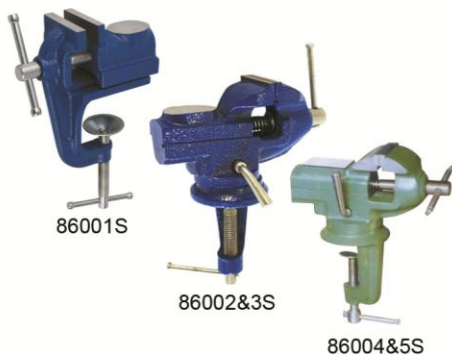
MODEL NO.	SIZE (MM)	WIDTH OF JAW (MM)	QTY/CTN (PCS)	G.W./N.W. (KG)	CARTON SIZE (CM)
86403	75	75	30	36/34.5	36X35X27
86435	90	90	20	28/27	36X29X30

MULTI-PURPOSE TABLE VISE



MODEL NO.	SIZE (MM)	MAX. OPENING (MM)	THROAT DEPTH (MM)	QTY/CTN (PCS)	G.W./N.W. (KG)	CARTON SIZE (CM)
DT63	2-1/2"	58	34	6	25/23	37X32X25

DOVETAIL TABLE VISE



MODEL NO.	SIZE (MM)	WIDTH OF JAW (MM)	QTY/CTN (PCS)	G.W./N.W. (KG)	CARTON SIZE (CM)
86001S	50	50	10	11/10	32X26X18.5
86002S	50	50	10	23/21	43X39X22
86003S	60	60	10	24/22	43X39X22
86004S	50	50	10	27/25	43X39X22
86005S	60	60	10	28/26	43X39X22



PIPE CLAMP

MODEL NO.	SIZE (INCH)	QTY/CTN (PCS)	G.W./N.W. (KG)	CARTON SIZE (CM)
G1/2	1/2"	40	26/24	42X31X25
G3/4	3/4"	30	32/30	37X35X30
G3/4L	3/4"	30	35/34	37X35X30
G3/4A	3/4"	30	34/33	37X35X30



PIPE CLAMP WITH L HANDLE

MODEL NO.	SIZE (INCH)	QTY/CTN (PCS)	G.W./N.W. (KG)	CARTON SIZE (CM)
GL1/2	1/2"	40	32/30	42X31X25
GL3/4	3/4"	30	35.5/34.5	37X35X30
GL3/4L	3/4"	30	39.5/38.5	37X35X30
GL3/4A	3/4"	30	38.5/37.5	37X35X30



SASH CLAMP

MODEL NO.	SIZE (INCH)	QTY/CTN (PCS)	G.W./N.W. (KG)	CARTON SIZE (CM)
F1024	24"	10	20/19	37X12X24
F1036	36"	10	24/23	98X13X24
F1048	48"	10	28/27	128X13X24
F1060	60"	10	33/32	158X13X24
F1072	72"	10	38/37	189X13X24



HEAVY DUTY FORGED STEEL F CLAMP

MODEL NO.	SIZE (INCH)	QTY/CTN (PCS)	G.W./N.W. (KG)	CARTON SIZE (CM)
F3016H	120X400	10	23/22	52X23X19
F3020H	120X500	10	25/24	58X23X19
F3024H	120X600	10	28/27	68X23X19
F3032H	120X800	6	20/19	90X18X14
F3040H	120X1000	6	23/22	110X18X14
F3048H	120X1200	4	18/17	135X18X10
F3060H	120X1500	4	21/20	160X18X10



AMERICAN TYPE HEAVY DUTY PIPE WRENCHES

MODEL NO.	SIZE (INCH)	QTY/CTN (PCS)	G.W./N.W. (KG)	CARTON SIZE (CM)
P2008P	8"	72	29/28	30X21X20
P2010P	10"	48	32/31	30X27X20
P2012P	12"	36	33/32	35X30X15
P2014P	14"	24	31/30	35X27X15
P2018P	18"	12	24/23	43X17X18
P2024P	24"	10	30/29	53X30X13
P2036P	36"	6	31/30	80X21X15
P2048P	48"	4	36/35	106X17X17



ALUMINIUM ALLOY PIPE WRENCHES

MODEL NO.	SIZE (INCH)	QTY/CTN (PCS)	G.W./N.W. (KG)	CARTON SIZE (CM)
A2008	8"	60	25/24	31X21X20
A2010	10"	24	23/22	32X24X18
A2012	12"	24	18/17	30X24X18
A2014	14"	24	25/24	36X34X14
A2018	18"	12	19/18	42X21X14
A2024	24"	8	21/20	56X26X12
A2036	36"	6	23/22	80X22X15
A2048	48"	4	27/26	106X17X17



LIGHT DUTY G-CLAMP

MODEL NO.	SIZE (INCH)	QTY/INNER(PCS)	QTY/CTN (PCS)	G.W./N.W. (KG)	CARTON SIZE (CM)
G3001	1"	12	360	26/25	35X25X15
G3002	2"	12	180	23/22	40X30X12
G3003	3"	12	120	25/24	39X28X15
G3004	4"	6	60	26/25	37X25X21
G3005	5"	6	48	29/28	40X23X22
G3006	6"	6	36	30/29	35X27X24
G3008	8"	6	24	26/25	32X27X26
G3010	10"	5	15	25/24	38X33X15
G3012	12"	5	10	22/21	43X24X16



STEEL ANVIL WITH DOUBLE HORN

MODEL NO.	SPEC (KG)	QTY/CTN (PCS)	G.W./N.W. (KG)	CARTON SIZE (CM)
A005S	5	4	21/20	50X25X19
A010S	10	2	22/20	33X30X22
A015S	15	1	16/15	33X15X20
A020S	20	1	22/20	40X18X20
A030S	30	1	32/30	45X21X24
A050S	50	1	52/50	46X23X25
A100S	100	1	110/100	61X27X29



STEEL ANVIL WITH SINGLE HORN

MODEL NO.	SPEC (KG)	QTY/CTN (PCS)	G.W./N.W. (KG)	CARTON SIZE (CM)
A010D	10	2	22/20	35X31X19.8
A020D	20	1	22/20	41X18X19
A045D	45	1	47/45	53X23X25
A060D	60	1	62/60	58.5X25X27.5
A080D	80	1	83/80	64.5X27.5X30
A100D	100	1	103/100	69X31.5X33



RAIL STEEL ANVIL

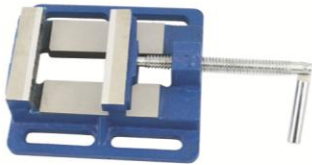
MODEL NO.	SPEC (MM)	QTY/CTN (PCS)	G.W./N.W. (KG)	CARTON SIZE (CM)
A110G	110	6	21/19	34.5X21X14
A150G	150	6	30/28	39X32X15.5



CASTING ANVIL

MODEL NO.	SPEC (KG)	QTY/CTN (PCS)	G.W./N.W. (KG)	CARTON SIZE (CM)
A001	1	50	25/23	37X21X21
A003	3	12	19/17	33X20X21
A007	7	5	18/16	17X20X21
A011	11	4	21/19	50X25X19
A024	24	2	24/22	33X30X22
A033	33	1	16/15	33X15X20
A055	55	1	27/25	40X18X20
A075	75	1	36/34	45X21X24
A100	100	1	47/45	46X23X25
A200	200	1	93/90	61X27X29
A300	300	1	139/136	68X32X35

AMERICAN TYPE DRILLING CLAMP



MODEL NO.	WIDTH OF JAW (MM)	HEIGHT OF JAW (MM)	MAX.OPENING (MM)	G.W./N.W. (KG)	QTY/CTN (PCS)	CARTON SIZE (CM)
Q192A	67	24	70	21/19	10	33X32X21
Q193A	75	24	78	22/20	10	32X32X22
Q194A	100	26	110	32/30	10	37X35X26
Q195A	125	26	128	44/42	8	43X30X29
Q196A	150	26	150	44/42	5	40X25X32

GERMANY TYPE DRILLING CLAMP



MODEL NO.	WIDTH OF JAW (MM)	HEIGHT OF JAW (MM)	MAX.OPENING (MM)	G.W./N.W. (KG)	QTY/CTN (PCS)	CARTON SIZE (CM)
J1975G	75	27	60	18/17	10	26.5X26.5X23.5
J19100G	100	30	90	25/24	8	37X25.5X27
J19125G	125	30	115	26/25	6	40X19.5X32.5
J19150G	150	30	145	35/34	6	45X21X34.5
J19200G	200	45	180	14/13	1	39.5X27.5X10

QB MACHINE VISE



MODEL NO.	WIDTH OF JAW (MM)	HEIGHT OF JAW (MM)	MAX.OPENING (MM)	G.W./N.W. (KG)	QTY/CTN (PCS)	CARTON SIZE (CM)
QB136	135	36	170	17/16	1	42X20X15
QB160	160	51	180	27/26	1	42X21X17
QB200	200	64	220	38/37	1	50X24X18
QB250	250	64	280	57/55	1	61X30X20
QB320	320	81	360	86/84	1	72X39X22

QH MACHINE VISE



MODEL NO.	WIDTH OF JAW (MM)	HEIGHT OF JAW (MM)	MAX.OPENING (MM)	G.W./N.W. (KG)	QTY/CTN (PCS)	CARTON SIZE (CM)
QH80	80	32	63	30/28	4	25X13X11
QH100	100	35	80	45/44	4	28X15X13
QH125	125	40	100	18/17	1	33X20X17
QH160	160	52	125	34/33	1	43X23X18
QH200	200	63	160	45/44	1	47X27X29

QM16N ACCU-LOCK PRECISION MACHINE VISE

MODEL NO.	WIDTH OF JAW (MM)	HEIGHT OF JAW (MM)	MAX.OPENING (MM)	G.W./N.W. (KG)	QTY/CTN (PCS)	CARTON SIZE (CM)
QM16100N	100	32	100	12/11	1	36X15X15
QM16150N	150	45	150	26/25	1	45X32X14
QM16160N	160	45	160	30/29	1	45X20X21



Q93 DOUBLE-ACTION TIGHT PRECISION MACHINE VISE

MODEL NO.	WIDTH OF JAW (MM)	HEIGHT OF JAW (MM)	MAX.OPENING (MM)	G.W./N.W. (KG)	QTY/CTN (PCS)	CARTON SIZE (CM)
Q93100	100	35	76	18/17	1	58X18X17
Q93160	160	50	100	49/48	1	73X28X20



QM ACCU-LOCK PRECISION MACHINE VISE

MODEL NO.	WIDTH OF JAW (MM)	HEIGHT OF JAW (MM)	MAX.OPENING (MM)	G.W./N.W. (KG)	QTY/CTN (PCS)	CARTON SIZE (CM)
16100	100	32	100	17/16	1	36X25X15
16125	125	40	125	22/21	1	41X27X17
16160	160	45	160	35/34	1	45X32X18
16160L	160	45	200	37/36	1	48X32X18
16200	200	50	220	51/50	1	56X36X20



CROSS SLIDE VISE

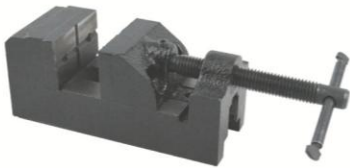
MODEL NO.	WIDTH OF JAW (MM)	HEIGHT OF JAW (MM)	MAX.OPENING (MM)	G.W./N.W. (KG)	QTY/CTN (PCS)	CARTON SIZE (CM)
CSV75	75	35	76	7.5/7	1	24X24X17
CSV100	100	46	102	9.5/9	1	27X27X17
CSV125	125	50	125	19/18	1	30X30X22
CSV150	160	53	150	28/27	1	37X37X22
CSV200	200	53	203	36/35	1	37X45X24





QHK DECLINABLE MACHINE VISE

MODEL NO.	WIDTH OF JAW (MM)	HEIGHT OF JAW (MM)	MAX. OPENING (MM)	G.W./N.W. (KG)	QTY/CTN (PCS)	CARTON SIZE (CM)
QHK100	100	41	80	18/17	1	35X21X20
QHK125	125	45	95	28/27	1	41X24X18
QHK160	160	50	125	37/36	1	44X26X20



DRILL PRESS VISE

MODEL NO.	SIZE (INCH)	WIDTH OF JAW (MM)	HEIGHT OF JAW (MM)	MAX. OPENING (MM)	G.W./N.W. (KG)	QTY/CTN (PCS)	CARTON SIZE (CM)
J038	1-1/2"	38	24	38	18.5/18	20	30X24X13.5



ADJUSTABLE MACHINE DRILLING CLAMP

MODEL NO.	WIDTH OF JAW (MM)	HEIGHT OF JAW (MM)	MAX. OPENING (MM)	G.W./N.W. (KG)	QTY/CTN (PCS)	CARTON SIZE (CM)
J065KJ	65	35	65	20/18	6	42X24X23
J090KJ	90	35	90	33/30	6	45X27X25
J125KJ	125	45	125	43/40	4	39X36X31
J150KJ	150	45	150	28/27	2	23X41X33



36 teeth 18 teeth 9 teeth



MODEL NO.	DM5A
CHAMFER SIZE	0-5MM
CHAMFER ANGLE	45°
MOTOR	250W
MOTOR SPEED	2800RPM
G.W./N.W.	14/13 KGS
CARTON SIZE	34X34X23 MM
PCS/20' GP	1020 PCS

MODEL NO.	DM5
CHAMFER SIZE	0-5MM
CHAMFER ANGLE	45°
MOTOR	370W
MOTOR SPEED	0-4300RPM
G.W./N.W.	16/15 KGS
CARTON SIZE	34X34X23 MM
PCS/20' GP	1020 PCS



COOPERATION

QUALITY·INNOVATION·EXPERTISE

MAKE YOUR JOB EASIER

★
BEIJING

●
TIANJIN

●
JINAN

●
LAIZHOU

●
YANTAI

●
QINGDAO



LAIZHOU HONGZUN MACHINERY CO.,LTD.

Add: No. 1059 Wuli Street Wenchang

Rd Laizhou Shandong China

Tel: 86-535-2387721

Fax:86-535-2387721

Email: info@hongzunttools.com

www.hongzunttools.com